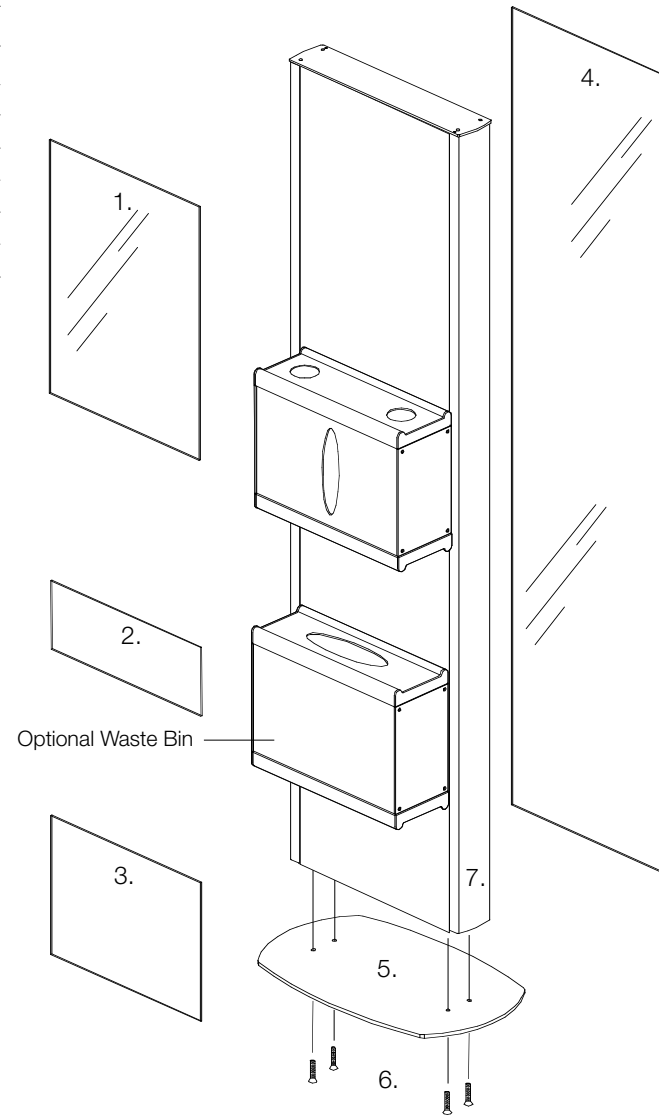


HealthView Parts List - Exploded View

Description	Code*	QTY/Assy
1. Top Clear Lens	H300I-CL-(specify product size)	(1)
2. Middle Filler Panel	H300I-(specify product size)	(1)
3. Bottom Filler Panel	H300I-(specify product size)	(1)
4. Back Panel or Clear Lens	H300I-(specify product size)	(1)
5. Base Plate	HPD-B-(specify product size)	(1)
6. Attachment screws	Flat Phil T/C Type F x 1"	(4)
7. Vertical Frame Assembly	H300-VFA (specify product size)	(1)

*Note: If replacements are needed, specify kiosk size. ____H x ____W



Tools



Assembly Hardware



Prepare Kiosk for Base Attachment

- Remove the base plate from the carton and remove protective packing materials.
Caution: Steel plate is heavy, take precautions to prevent dropping. Set aside.
- Remove kiosk from the carton and leave protective channels in place until base is secured. Place the kiosk across the shipping carton.
- Use the (4) Phillips head machine screws to attach base plate to kiosk as shown (Fig 1).
- Stand kiosk upright and remove remaining packing materials.

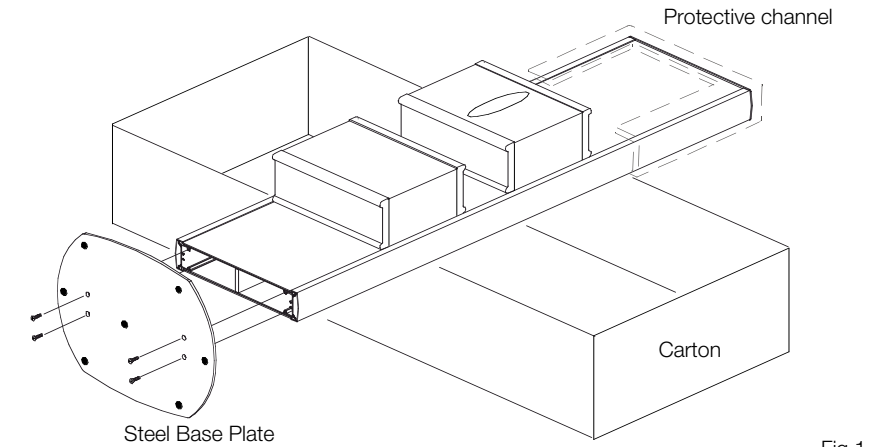


Fig 1

Kiosk Clear Lens (CL) Removal

First locate Magnetic Tool and Suction Cup Tool (SCT).

- Use the Magnetic Tool to remove Locking Pin. Access the Locking Pin by removing green tape at top right hand corner of kiosk. Place the magnet over the steel pin as shown in Fig 2 and lift Pin out of the kiosk.

Should the pin be difficult to magnetically remove, shift Clear Lens (CL) to the left using the SCT.
- Use the SCT to shift the CL to the RIGHT. The LEFT side of the CL will release from the vertical edge. You can then pull the CL outward and away from the kiosk.
- A special low-tack tape to hold and position graphic insert is located at the top center of the display area. Peel the white liner on the tape and position graphic. Press across the tape area to secure graphic while replacing the CL.
- Replace CL using SCT, inserting acrylic into the **right** side vertical edge. Push as far right as possible and then push left side of CL flat against the poster graphic. Then allow CL to shift slightly back to the left edge so the CL is captured within the kiosk profile.
- Replace Locking Pin.

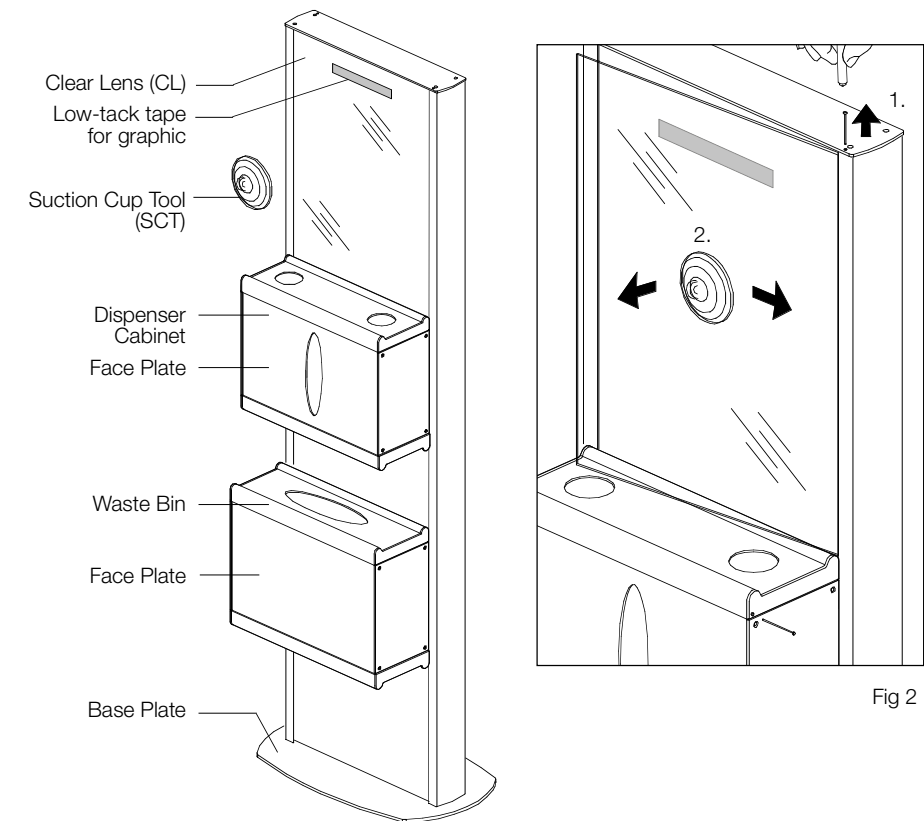


Fig 2

Assembly Instructions

Accessing Dispensing Cabinets

If your Dispenser Cabinet is equipped with the Vandal Resistant option, there will be a locking Pin in the upper right side of the cabinet.

First, remove the green tape which is covering the Locking Pin. Then use the provided Magnetic Tool to remove the Locking Pin.

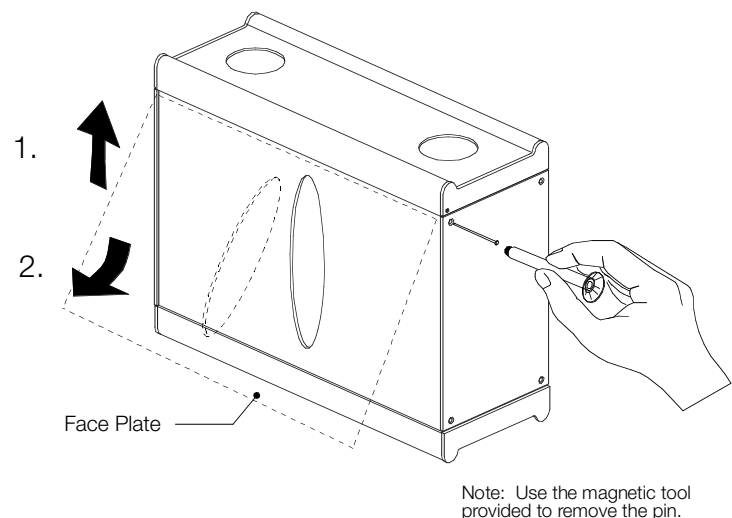
Once the Locking Pin is removed, the cabinet Face Plate can be removed.

If the faceplate has an opening(s) for tissues or masks, simply lift the Face Plate UP and then pull OUT from the cabinet using your hands.

If the Face Plate does NOT have an opening, press the provided Suction Cup Tool (SCT) firmly against the Face Plate and then lift UP and pull OUT from the cabinet.

See Re-Stocking instructions in this manual for information regarding the insertion and removal of infection control products within your HealthView product.

NOTE: if your HealthView product was selected and ordered from the APCO HealthView Essentials offering, (1) complete set of infection control product contents has been included with your order.



Accessing Inside of Optional Waste Bin Cabinet

Use provided Suction Cup Tool (SCT) and press firmly against the face of the Face Plate. Then lift Face Plate UP and OUT from the cabinet.

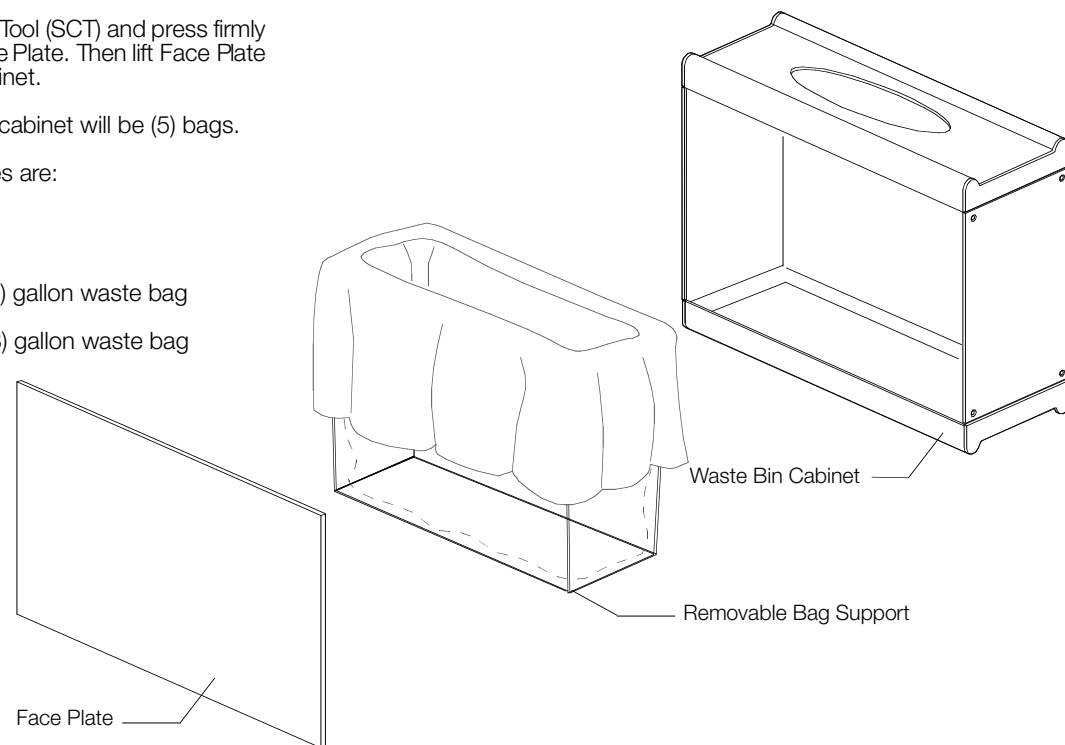
Included in the Waste Bin cabinet will be (5) bags.

The plastic waste bag sizes are:

Cabinet Sizes with the code

1175..... (4) gallon waste bag

1425 & 1825..... (8) gallon waste bag



Re-Stocking Dispenser Cabinet

IMPORTANT! Your HealthView product was engineered and manufactured to accommodate specific brands of infection control products as established during your preorder communication with APCO and as described in the APCO Order Acknowledgement you received. Other brands of infection control products may not be compatible with your HealthView product as currently engineered.

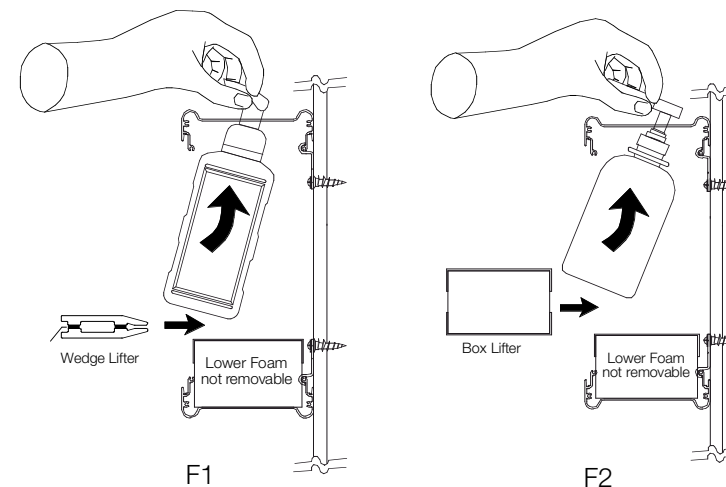
Hand Foam/Gel

Insert top handle of bottle through circular hole in cabinet top. Hold the container with one hand while inserting the Lifter beneath.

Wedge Lifter or Box Lifter is intended to be removed and replaced. DO NOT DISCARD. The Lifter provides upper pressure to the foam pump device necessary to keep the pump dispenser in place.

The lower Foam Lifter is a permanent part of the cabinet and should not be removed.

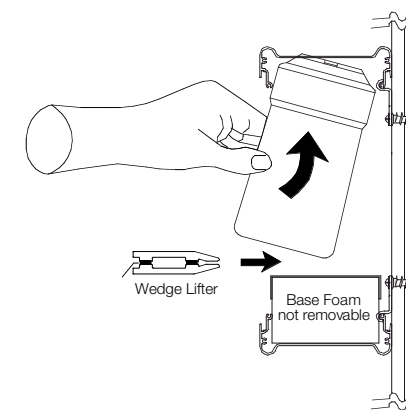
F1 - X3 Hand Foam package shown
F2 - Endure 320 Hand Foam package shown



Wipes - W1

To install Wipes, slip container under large hole and rotate container to align to shape. Push Wedge Lifter under container base.

Caution: Be sure Wipes "Cap Hinge" is positioned toward the back of the cabinet.



Tissue - T1 & M1

To install Tissues, use (2) 2" boxes and slip in cabinet top first as shown. Tissue boxes rest on a flat plate in the bottom of cabinet.

Note: Always leave one box behind the front box to keep dispensing product forward.

T1- Tissue Box size: 9"h x 4-3/4"w x 2"d
M1- Mask Box size: 7-3/8"h x 4"w x 4-1/4"d

