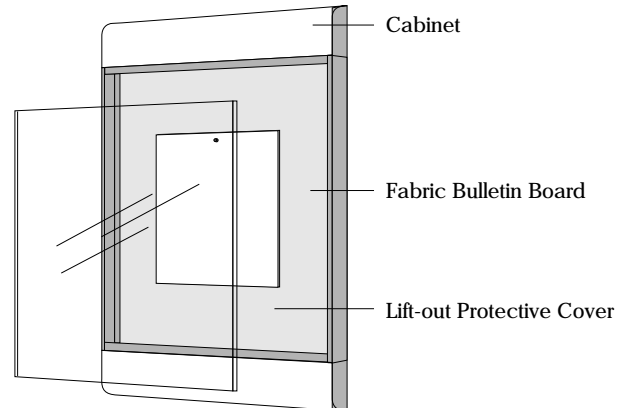




The key to a successful installation of your Visulex 40 Bulletin Board is the selection of appropriate fasteners and following these simple instructions. Instructions can be read in less than three minutes. Doing so will ultimately save you time, insure a successful installation and describe proper maintenance. Visulex 40, with Fabric Bulletin Board feature, is intended for interior application only.

Mounting Surface Conditions

It is essential the surface to which your Visulex will be attached is smooth and flat. Otherwise the hanger bar may become distorted, preventing the cabinet from properly seating and locking into position. Avoid bridging poor dry wall joints and seams or, in the case of masonry block or brick surfaces, irregularities and imperfections that may cause alignment problems



Installation

Before beginning installation, remove the shatter proof clear plastic cover(s) by lifting upward and outward using the Suction Cup Removal Tool provided (see illustration on reverse side).

1. After selecting mounting location, determine where the top of the unit should be positioned and mark a line with light pencil (Fig. 1) For comfortable viewing and servicing, normally the vertical center of the module should be approximately 60" from the finished floor.
2. Measure 1-1/2" down from the top of the Visulex cabinet and place the *bottom* of the aluminum hanger bar on this mark. (Fig. 2) Once you insure that it is level, mark all mounting holes and remove the hanger bar. (Fig. 3) Set hanger bar aside.
NOTE: It is always desirable to fasten directly into a wall stud or support when possible. You may need to drill additional holes into the mounting bar for this purpose.
3. Select fastening hardware. Fastening hardware is not included, owing to the many wall conditions, such as dry wall, wood, masonry and so on. A wide range of fasteners, such as those described below, are available from your local hardware. (Fig. 5) Please follow the manufacturers instructions for specific fasteners then secure hanger to wall surface.
4. Once the hanger bar is firmly affixed to the mounting surface, hold your Visulex Bulletin Board at approximately 45° to the wall and place the channel on the back of the unit over the hanger bar. (Fig. 4) Make sure the hanger bar is fully engaged and lower the unit so it is flush with the wall. Double check to insure that the unit is properly engaged.

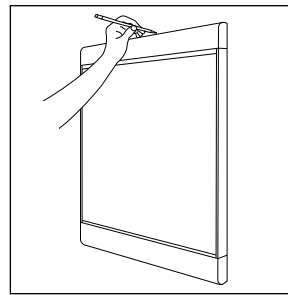


Fig. 1

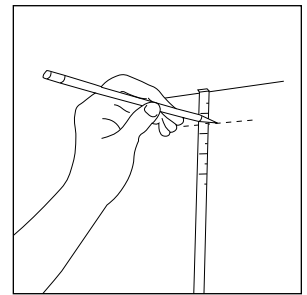


Fig. 2

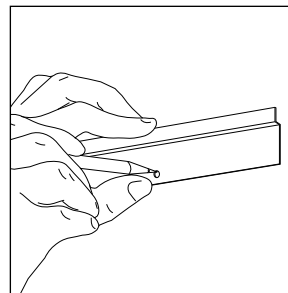


Fig. 3

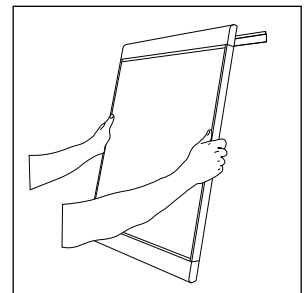


Fig. 4

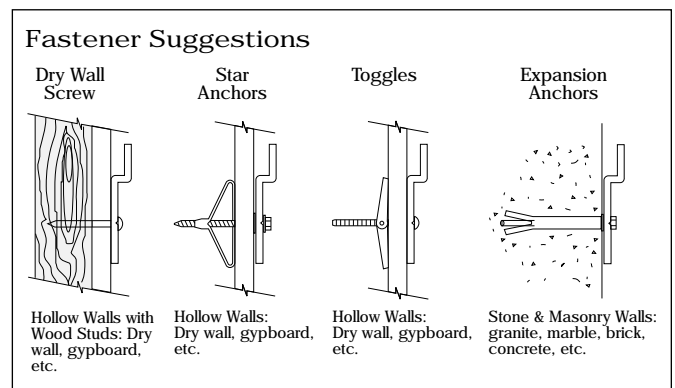


Fig. 5



Installing the Security Lock(s)

1. With the unit in position, place a mark on the wall at the center of the unit, along the bottom edge. (Fig. 1) More than one lock may be necessary for large units, in which case they should be located approximately 10" inward from each end.
2. Lift the unit off the hanger bar by pivoting it upward 45° and disengaging from the hanger bar. Set the unit aside.
3. Measure up to 1-1/4" from the bottom mark. (Fig. 2) Install the appropriate wall fastener and fasten the lock(s) securely to the wall. (Fig. 3)
4. Reattach the unit to the hanger bar and lower it carefully until engages with the lock(s), which will automatically snap into the lower channel on the back of the unit. (Fig. 4) Should the lock not align with the channel, do no force engagement, but loosen the wall fastener, adjust the height of the lock and retighten.

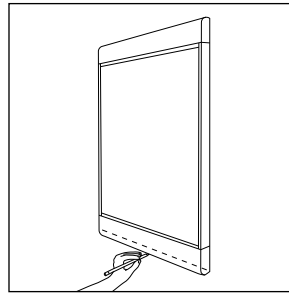


Fig. 1

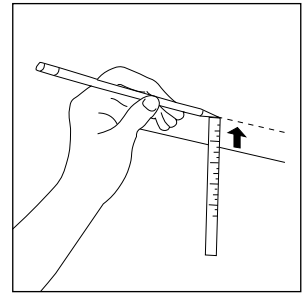


Fig. 2

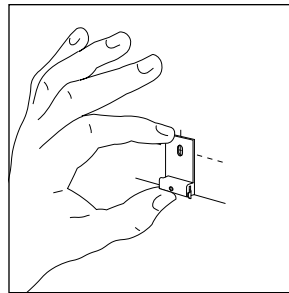


Fig. 3

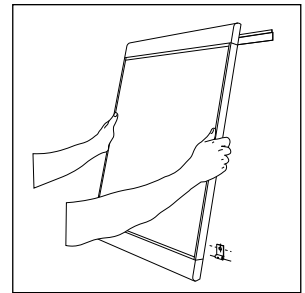


Fig. 4

Unlocking the Security Lock(s)

The wall lock(s) may be unlocked only with the security key. The key must *always* be inserted to the left of the lock(s).

1. Place the key against the bottom of the Visulex cabinet, with the key lip between the back of the cabinet and the wall. (Fig. 1)
2. Swing the key downward until the flat area rests against the wall surface. (Fig. 2.) Align notch in key with bottom edge of module. (Fig. 3)
3. Slide the key to the right until it stops against the lock(s). (Fig. 3)
4. Pull key smartly downward until the lock disengages. (Fig. 4) The Visulex unit can then be pulled outward and removed following the above instructions.

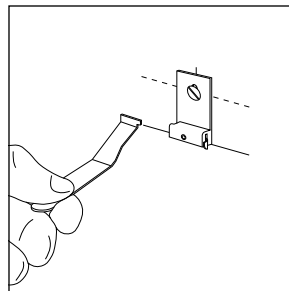


Fig. 1

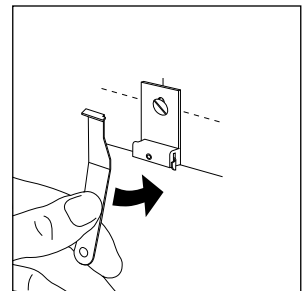


Fig. 2

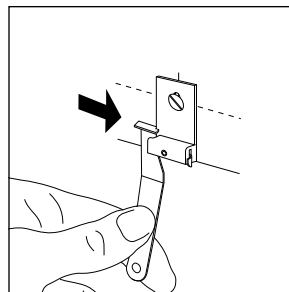


Fig. 3

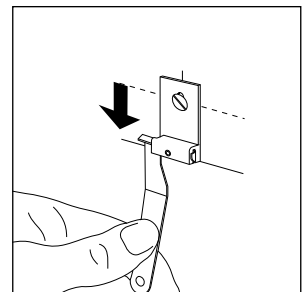
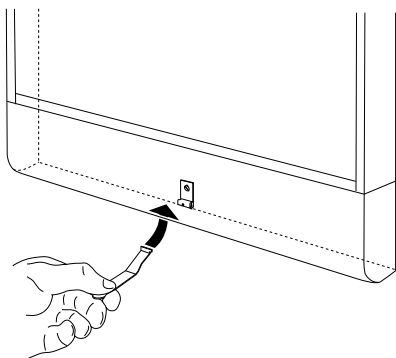


Fig. 4





Removing Clear Plastic Cover

Parts supplied:

Suction Cup Tool (SCT)1

Qty.

1. Attach Suction Cup Tool (SCT) to face of Plastic Cover. Press center of Suction Cup to achieve a vacuum-type bond. (Fig. 1)
2. Lift upward until cover clears the bottom channel, then pull outward at the bottom to remove cover. (Figs. 2 & 3)
3. To release the SCT from the cover, compress the two protruding 'nibs' at the base of the cup.

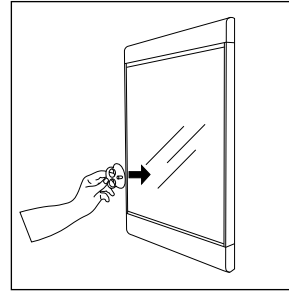


Fig. 1

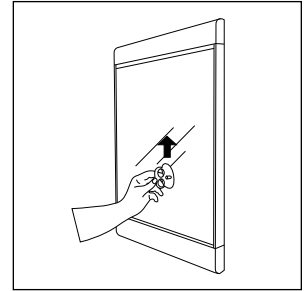


Fig. 2

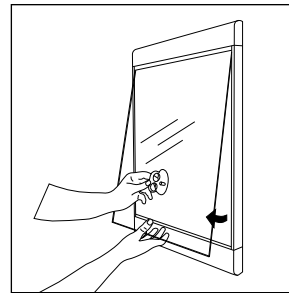


Fig. 3

Cleaning the Clear Plastic Cover

Your Visulex cover is a shatterproof acrylic. Avoid using ammonia based window cleaners and other solvents that are not recommended for plastics. An antistatic cleaner and polish specifically for plastics is recommended, with application using a soft, lint-free cloth.

Cleaning the Cabinet Surfaces

Your Visulex cabinet is coated with a durable finish that normally requires no maintenance. Occasional cleaning with a mild solution of soap and water will keep the finish looking good for years to come.

Avoid harsh cleaners, abrasives or any solutions that contain solvents that may be harmful to the finish. Should coated surfaces become scratched, touch-up paint is available.

Cleaning the Fabric Bulletin Board

Your Visulex 40 incorporates a heavy duty Maharam[®] textile wall covering called Tex-Wall[®] 1000. Tex-Wall is easily cleaned using traditional methods of washing, wiping, vacuuming, etc. depending upon the extent of soiling. Indelible stains can usually be removed, if necessary, using undiluted chlorine bleach with no damaging effects. Do not allow bleach to contact other surfaces.



Need Assistance?

Should you have questions or need additional information/explanation on any point, please call 404.688.9000, or visit our website www.apcosigns.com.