

# PolySign® Single Panel Series Illuminated Fiberglass



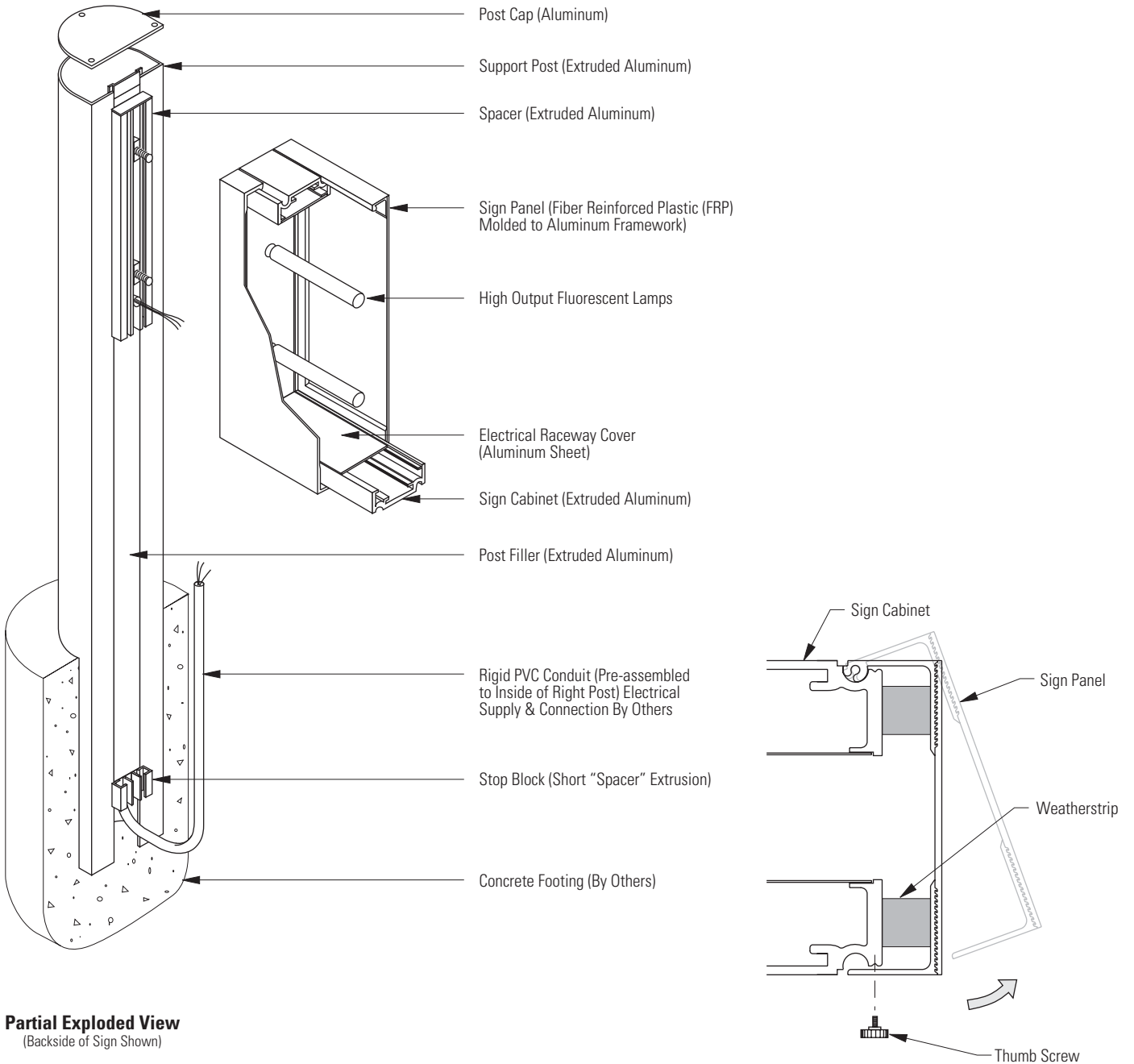
**4210.1**  
Double Post and Panel  
Double Post and Pylon

Customer : \_\_\_\_\_ Customer Order No. : \_\_\_\_\_

Project Name : \_\_\_\_\_ APCO Order No. : \_\_\_\_\_

Sign Type/Location No.: \_\_\_\_\_

Prepared by : (Print clearly) \_\_\_\_\_ Date : \_\_\_\_\_



**Partial Exploded View**  
(Backside of Sign Shown)

**Sign Panel Operation**

# PolySign® Single Panel Series Illuminated Fiberglass



**4210.1**  
Double Post and Panel  
Double Post and Pylon

## Sign Panel

Size: H. \_\_\_\_\_ W. \_\_\_\_\_

Background Color: \_\_\_\_\_

NOTE: Refer to Layout Drawing(s) for graphic layout and specifications.

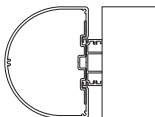
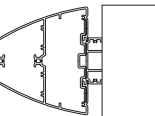
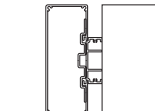
## Sign Cabinet Finish

- Dark Bronze (Simulated Polyurethane)
- 315 Black (Simulated Polyurethane)
- Natural Satin (Simulated Polyurethane)
- Other: \_\_\_\_\_

## Reveal Finish

- 315 Black Anodized (Standard)

## Post Shape

- Radius  
(Adds 7" to each end of panel) 
- Contour  
(Adds 9-1/8" to each end of panel) 
- Rectangular  
(Adds 4" to each end of panel) 

## Post Finish

- Dark Bronze (Simulated Polyurethane)
- 315 Black (Simulated Polyurethane)
- Natural Satin (Simulated Polyurethane)
- Other: \_\_\_\_\_

## Mounting Method

- In-Ground (Standard)
- Above Grade with Welded Aluminum Plates  
(Not Recommended for Anodized Post Finish)

Above Grade Anchor Bolt Qty.: 4 Per Post / Total: 8

- Anchors Provided By Others
- Anchors by APCO

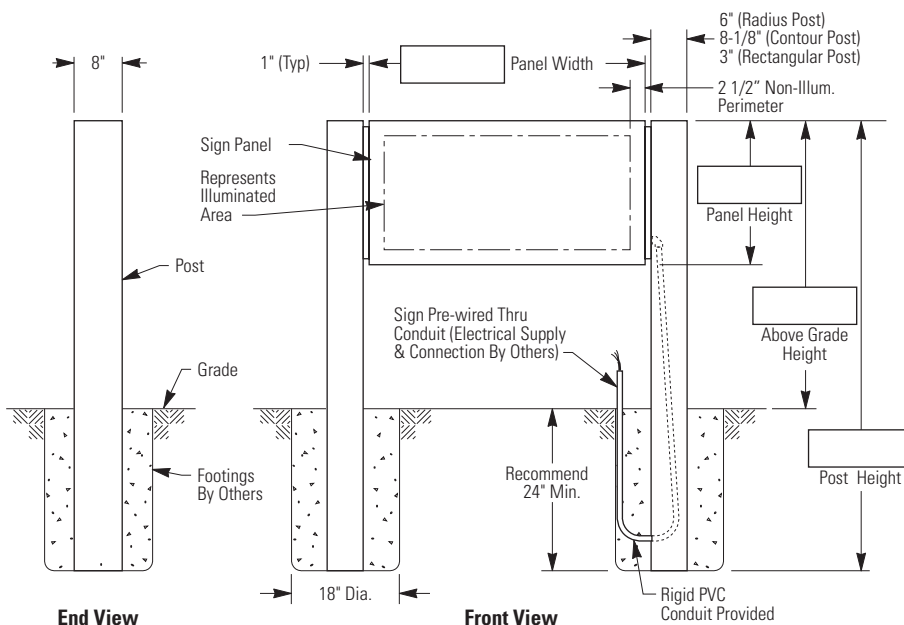
## Electrical

120 V, 60Hz  277 V, 60Hz  Other \_\_\_\_\_

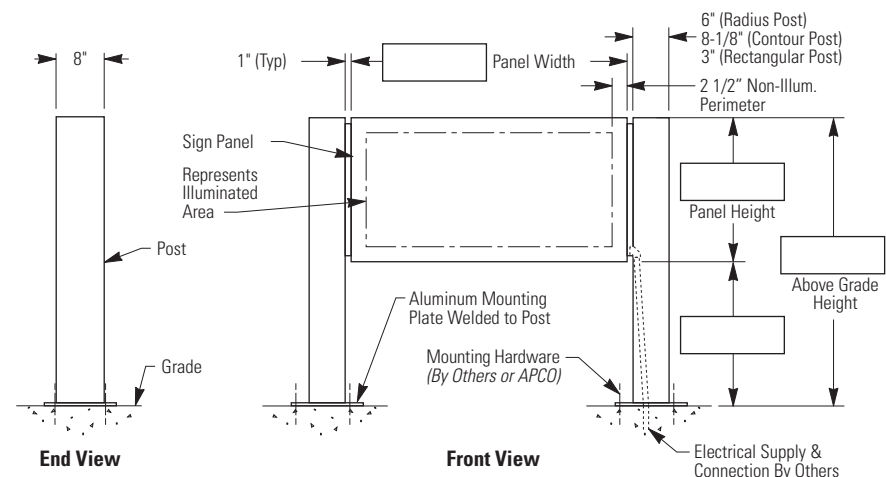
Amperage: \_\_\_\_\_

**NOTES:** Sign must be assembled prior to installation.  
Footing design to be specified by qualified person(s) based on local codes and geographical practices such as frost lines, soil conditions, etc.  
Electrical supply by others. All electrical connections to be performed by a licensed electrical contractor.  
Anchor bolts to be specified by qualified persons and installed per manufacturer's recommendations.

## In-Ground Installation (Standard)

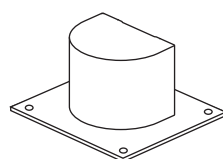


## Above Grade Installation (Optional)

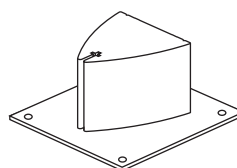


## Welded Mounting Plates

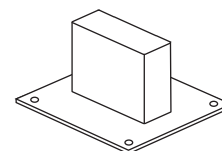
Mounting pattern available upon request.



Radius Post



Contour Post



Rectangular Post