

# PolySign® Single Panel Series Non-Illuminated Fiberglass



**4110.1RP**  
Double Post and  
Removable Panel

Customer : \_\_\_\_\_

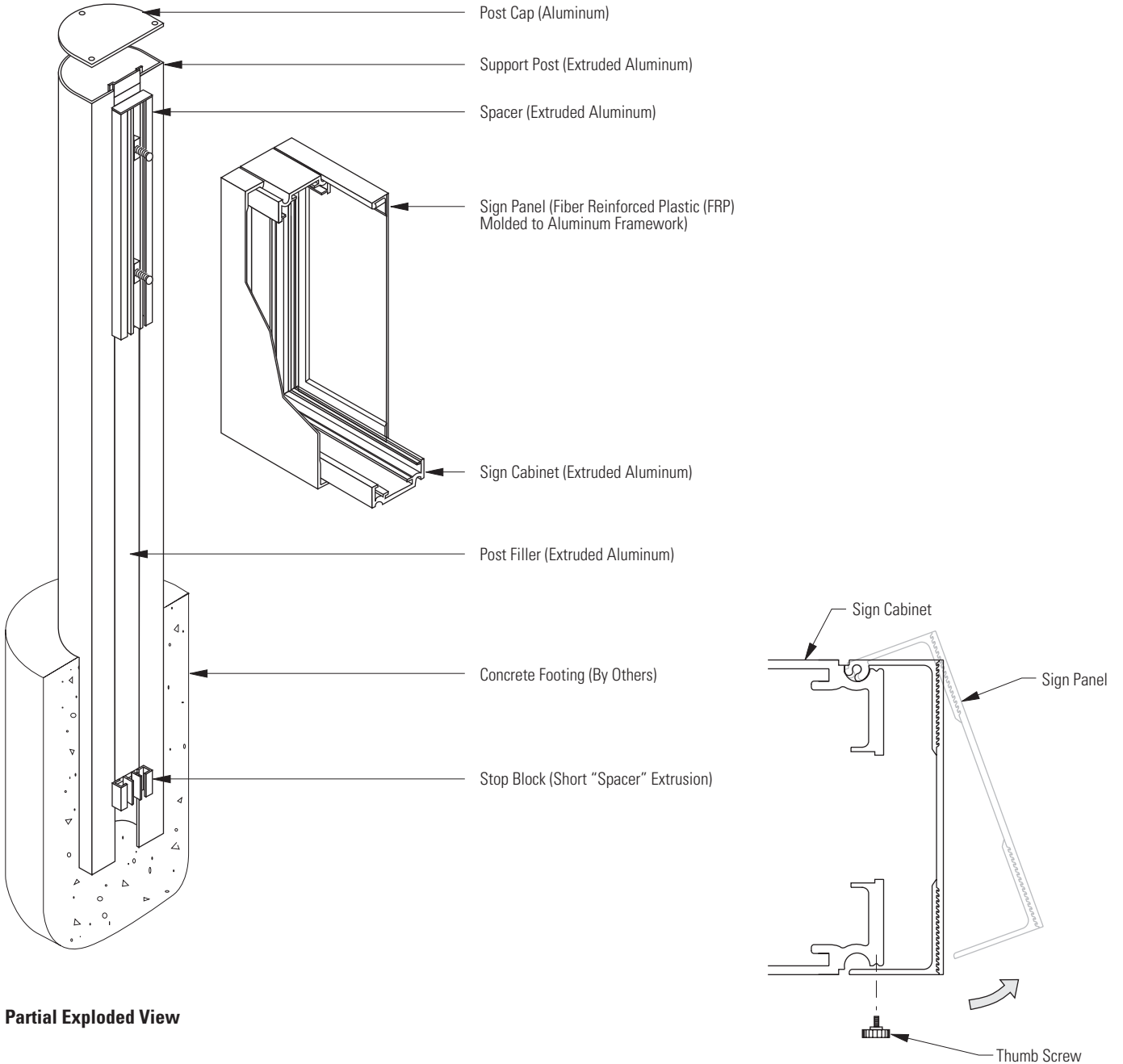
Customer Order No. : \_\_\_\_\_

Project Name : \_\_\_\_\_

**APCO Order No.** : \_\_\_\_\_

Sign Type/Location No.: \_\_\_\_\_

Prepared by : (Print clearly) \_\_\_\_\_ Date : \_\_\_\_\_



**Partial Exploded View**

**Sign Panel Operation**

# PolySign® Single Panel Series Non-Illuminated Fiberglass



**4110.1RP**  
Double Post and  
Removable Panel

## Sign Panel

Size: H. \_\_\_\_\_ W. \_\_\_\_\_

Background Color: \_\_\_\_\_

NOTE: Refer to Layout Drawing(s) for graphic layout and specifications.

## Sign Cabinet Finish

- Dark Bronze (Simulated Polyurethane)
- 315 Black (Simulated Polyurethane)
- Natural Satin (Simulated Polyurethane)
- Other: \_\_\_\_\_

## Reveal Finish

- 315 Black Anodized (Standard)

## Post Shape

- Radius 200mm  
(Adds 7" to each end of panel)
- Contour 200mm  
(Adds 9-1/8" to each end of panel)
- Rectangular 200mm  
(Adds 4" to each end of panel)

## Post Finish

- Dark Bronze (Simulated Polyurethane)
- 315 Black (Simulated Polyurethane)
- Natural Satin (Simulated Polyurethane)
- Other: \_\_\_\_\_

## Mounting Method

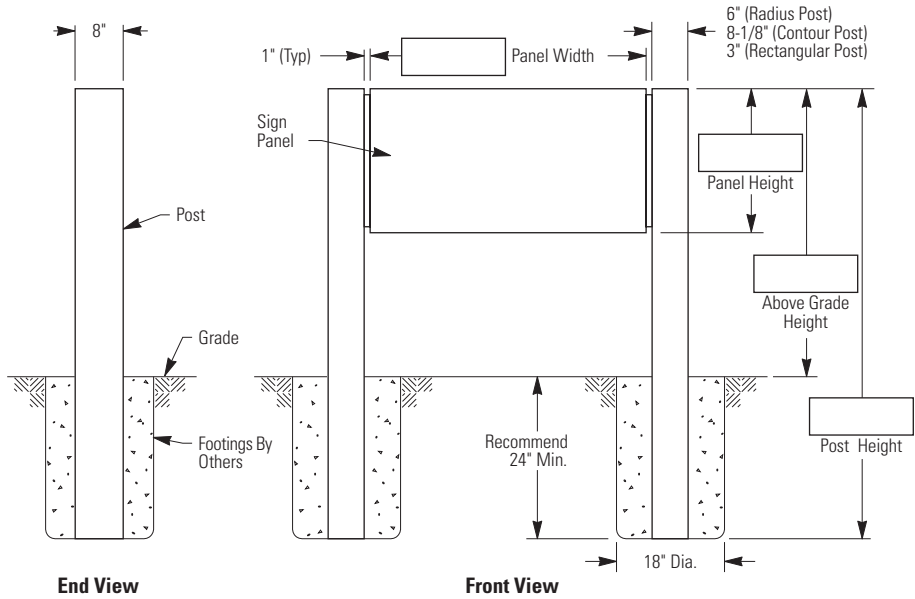
- In-Ground (Standard)
  - Above Grade with Welded Aluminum Plates
- Above Grade Anchor Bolt Qty.: 4 Per Post / Total: 8
- Anchors Provided By Others
  - Anchors by APCO

## Special Comments

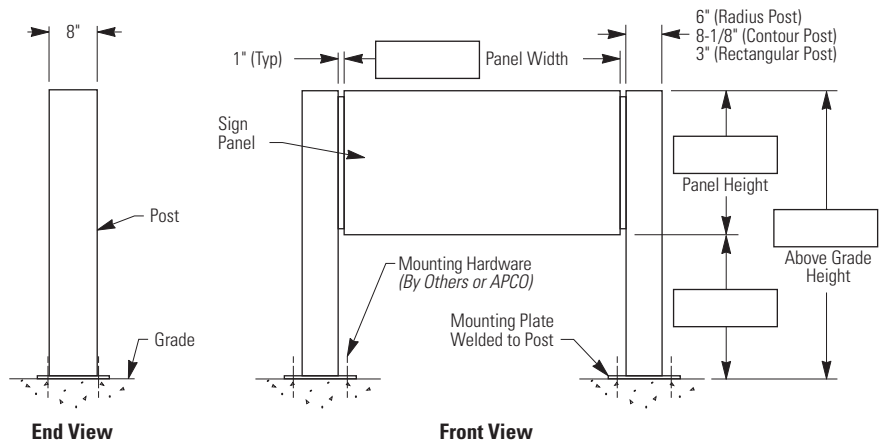
### NOTES:

Sign must be assembled prior to installation.  
 Footing design to be specified by qualified person(s) based on local codes and geographical practices such as frost lines, soil conditions, etc.  
 Anchor bolts to be specified by qualified person(s) and installed per manufacturer's recommendations.

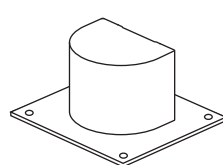
### In-Ground Installation (Standard)



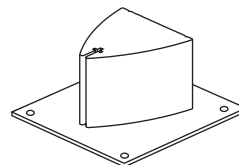
### Above Grade Installation (Optional)



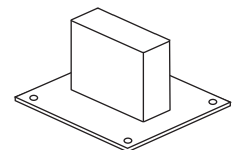
### Welded Mounting Plates Mounting pattern available upon request.



Radius Post



Contour Post



Rectangular Post