

# Visuline® 2400.5 Series with DisplayLight™ 8" Post Mounted Display



## Specifications

Customer : \_\_\_\_\_

Customer Order No. : \_\_\_\_\_

Project Name : \_\_\_\_\_

**APCO Order No. :** \_\_\_\_\_

Sign Type/Location No.: \_\_\_\_\_

Prepared by : (Print clearly) \_\_\_\_\_ Date : \_\_\_\_\_

Revision (Date) : \_\_\_\_\_

### Display Cabinet

- Interior Use
- Exterior Use

Size: H. \_\_\_\_\_ W. \_\_\_\_\_ D. 8"

### Housing Finish

- Natural Satin Anodized
- 313 Dark Bronze Anodized
- 315 Black Anodized
- Other \_\_\_\_\_

### Cabinet Side "B"

- Square profile and opaque door insert finished to match housing (*Single Sided Modules*)
- Door profile to match Side "A" (*Double Sided Modules*)

### Door Hinge & Lock Device

#### Side Hinged

- Left  Right
- 3M "Dual Lock" Fastener (*Included*)
- Conventional Keyed Cam Lock (*Requires custom 1" wide reveals*)

#### Top Hinged

- Top (*Opens approx. 60°, 75° or 90°, depending on door size & profile*)
- 3M "Dual Lock" Fastener (*Included*)
- Keyed Plunger Lock

### Special Comments

---



---



---



---



---



---



---

Top Cap (Aluminum) Spans From Post to Post

Support Post (Aluminum)

Spacer (Aluminum)

Visuline Display, Single or Double Sided

**To specify Visuline display, refer to separate Shop Drawing 2400.3**

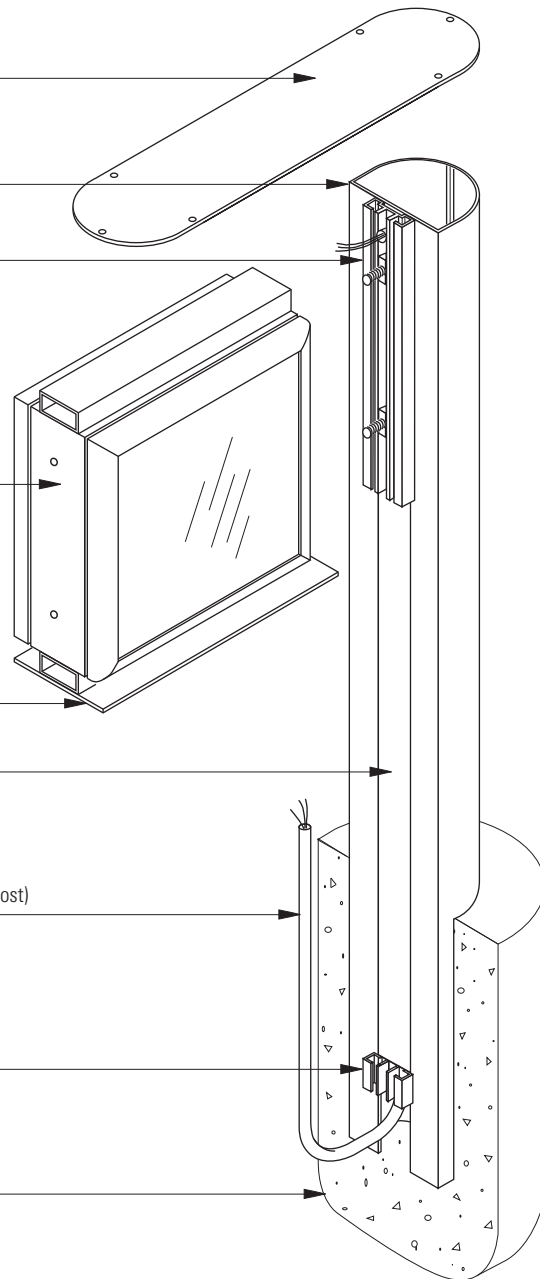
Bottom Cap (Aluminum) Spans Between Posts

Post Filler (Aluminum) Finished to Match Post

Rigid PVC Conduit (Pre-assembled to Inside of Post) Electrical Supply & Connection By Others

Stop Block (Short "Spacer" Extrusion)

Concrete Footing (By Others)



**Partial Exploded View**

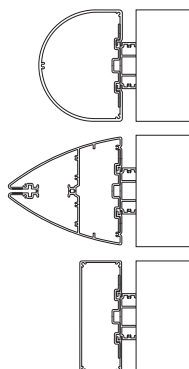
# Visuline® 2400.5 Series with DisplayLight™ 8" Post Mounted Display



## Specifications / Mounting Details

### Post Shape

- Radius 200mm  
(Adds 7" to each end of cabinet)
- Contour 200mm  
(Adds 9-1/8" to each end of cabinet)
- Rectangular 200mm  
(Adds 4" to each end of cabinet)



### Post Finish

- Dark Bronze (Simulated Polyurethane)
- 315 Black (Simulated Polyurethane)
- Natural Satin (Simulated Polyurethane)
- Other: \_\_\_\_\_

### Reveal Finish

- 315 Black Anodized (Std)
- Other \_\_\_\_\_

### Electrical

#### Power Entry

- Right Post (Std)
- Left Post

### Mounting Method

- In-Ground (Standard)
  - Above Grade with Welded Aluminum Plates
- Above Grade Anchor Bolt Qty.: 4 Per Post / Total: 8
- Anchors Provided By Others
  - Anchors by APCO

### Special Comments

---

---

---

---

---

---

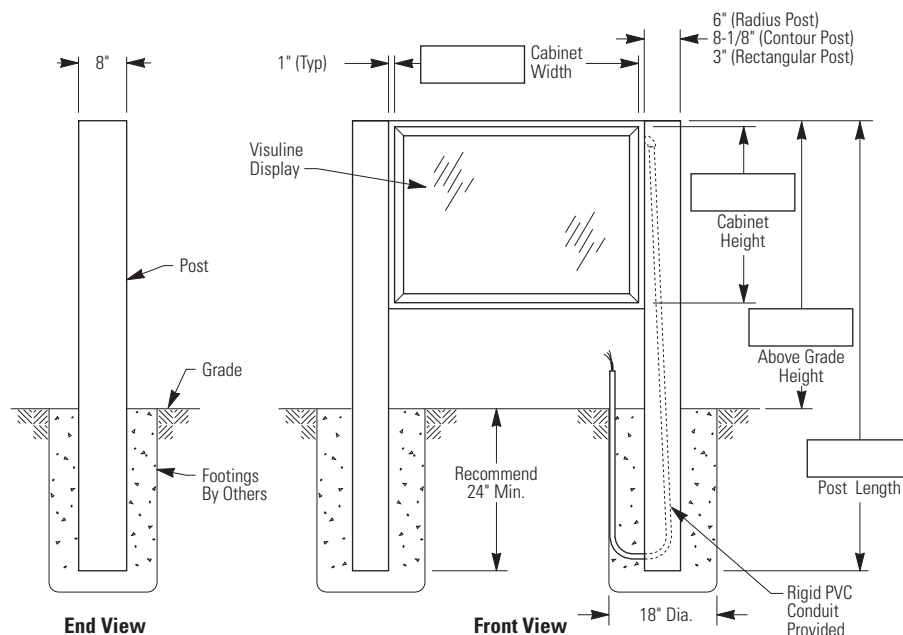
---

---

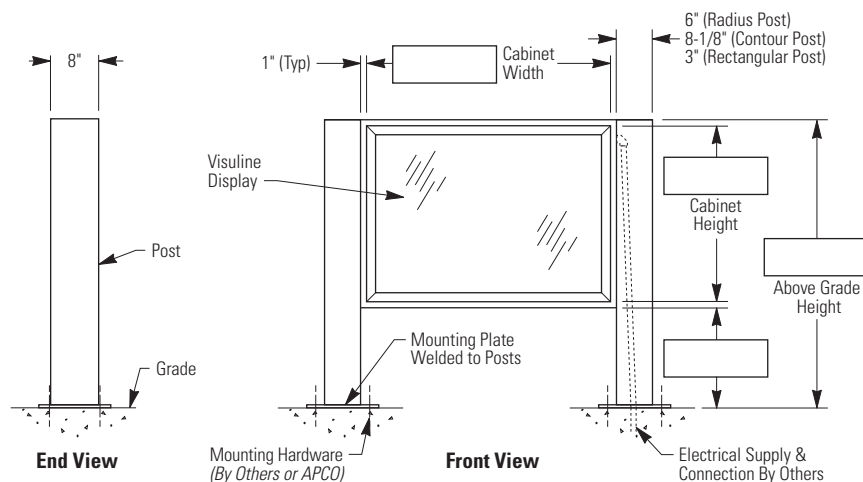
### NOTES:

Sign must be assembled prior to installation.  
 Footing design to be specified by qualified person(s) based on local codes and geographical practices such as frost lines, soil conditions, etc.  
 Anchor bolts to be specified by qualified person(s) and installed per manufacturer's recommendations.

### In-Ground Installation (Standard)

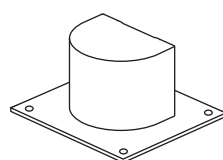


### Above Grade Installation (Optional)

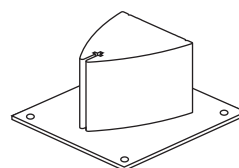


### Welded Mounting Plates

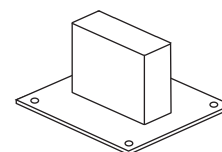
Mounting pattern available upon request.



Radius Post



Contour Post



Rectangular Post