

Visuline® 2300.2GC Series

Full Recessed Display



SUBMITTED FOR APPROVAL

This product is scheduled for shipment the week of :

Date _____

Production cannot begin until one (1) copy of these drawings is returned with your signature of approval by :

Date _____, otherwise rescheduling will be necessary. Drawing revisions may also require rescheduling.

Retain _____ Set(s)

Return _____ Set(s)

Customer Approval Required *(Check appropriate box)*

Purchaser _____

By (Print name & title clearly) _____

Signature _____ Date _____

Approved for Production

Approved as noted

Not approved
Resubmit with changes
Product subject to rescheduling

FOR REFERENCE ONLY *(Customer Waives Approval)*

Production Has Begun

This product is scheduled for shipment the week of :

Date _____

It is understood that customer, in waiving formal approval procedure, assumes full responsibility for the specifications, dimensions and details included herein.

APCO Use

Project Name _____ **APCO Order No.** _____

Customer Order No. _____

Original Submittal Date : _____

Prepared by (Print clearly) _____

Revision (Date) _____

All design rights reserved.

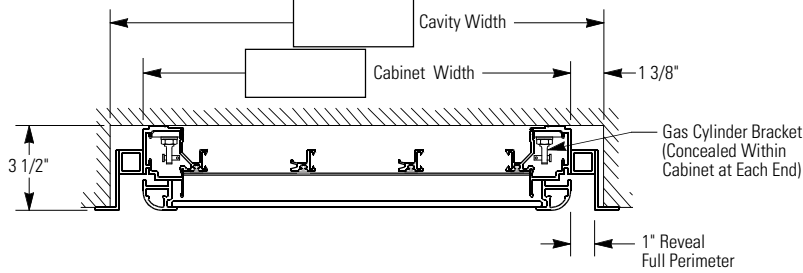
Visuline® 2300.2GC Series

Full Recessed Display

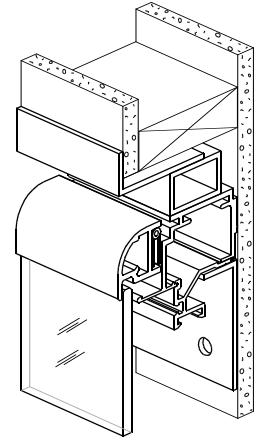


Product Details

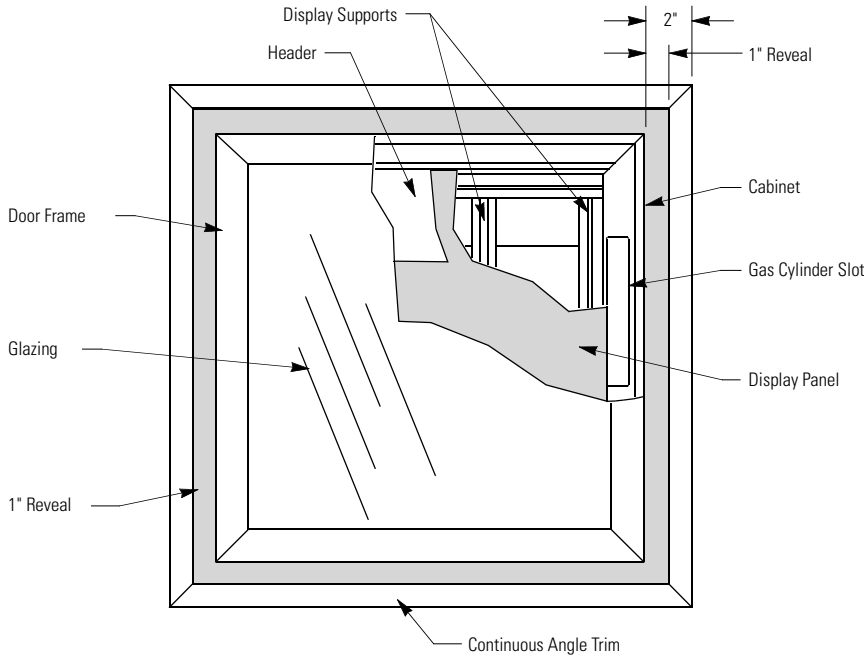
Section : Plan View



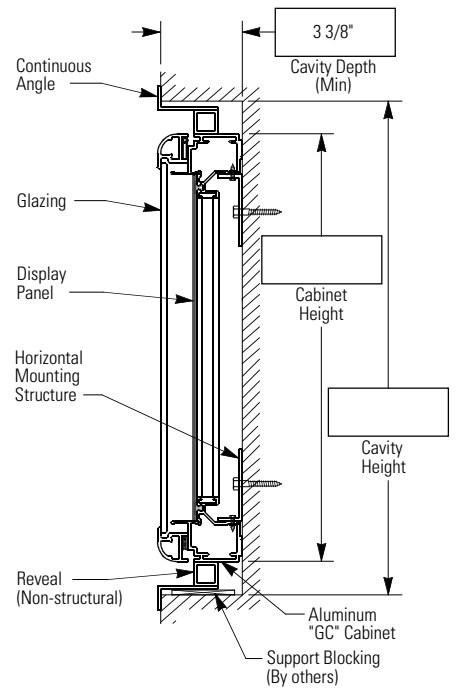
Cut-away Isometric View



Elevation : Front View

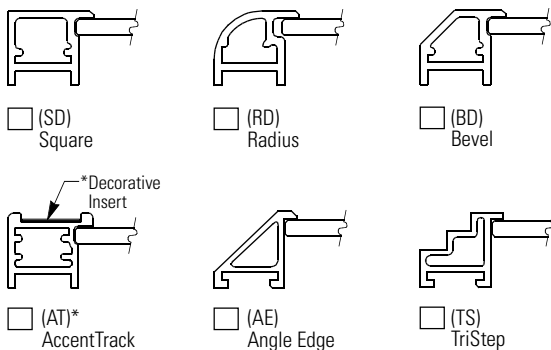


Section : Side View



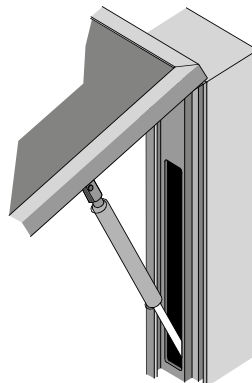
Door Profile Options

All shapes available in aluminum. Brass available in SD & RD only.



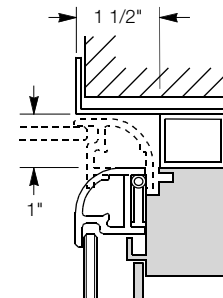
Gas Cylinder "Assists"

"GC" Cabinets are specifically designed for heavy, top hinged doors.



Door Operating Clearance

A 1" wide Reveal (tube) is attached to the cabinet to provide proper door operating clearance. A decorative, non-structural angle trim is then attached to the tube.



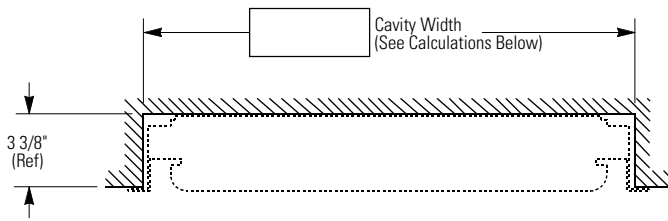
IMPORTANT :
See "Installation / Mounting Details" page to determine Cavity Dimensions.

Visuline® 2300.2GC Series Full Recessed Display



Installation / Mounting Details

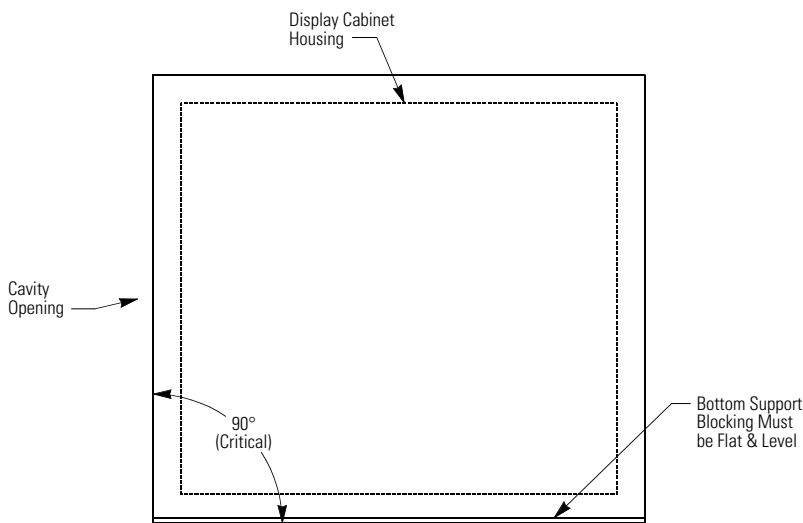
Section : Plan View



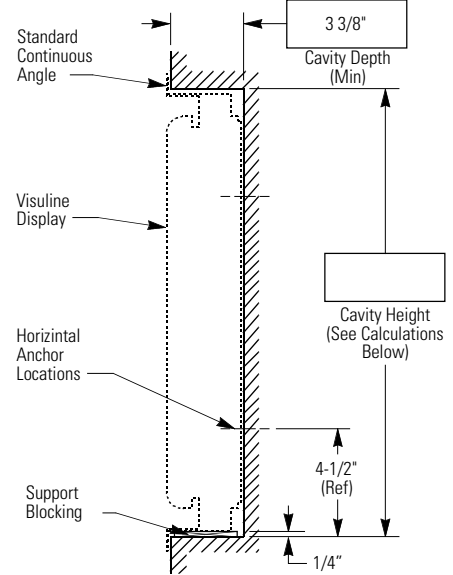
IMPORTANT :

APCO IS NOT RESPONSIBLE FOR CAVITY CONSTRUCTION WHICH VARIES FROM SPECIFICATIONS SHOWN ON THIS PAGE. Wall cavity opening must be precisely constructed in terms of size, squareness and depth. Size calculations and cavity opening tolerances are shown below.

Elevation : Front View



Section : Side View



Wall Cavity Size : Standard

Continuous Angle

The Continuous Angle is recommended to conceal rough cut openings while allowing for inconsistencies in cavity size. It also helps to avoid obstruction of the reveal area which is required for proper door operation. To determine cavity opening, add 2-3/4" to both the cabinet's height and width.

$$\boxed{\text{Cabinet Height}} + 2\text{-}3/4" = \boxed{\text{Cavity Height}}$$

$$\boxed{\text{Cabinet Width}} + 2\text{-}3/4" = \boxed{\text{Cavity Width}}$$

These calculations include a 1" Reveal, 1/8" thick Continuous Angle and 1/2" total installation clearance.

Overall cavity tolerance is +/- 1/8".

Wall Cavity Size : Optional

"Flat Bar" Trim

A 1/8" wide "Flat Bar" can be substituted when the 1" wide Continuous Angle is not desired. To determine cavity opening, add 2-3/8" to both the cabinet's height and width.

$$\boxed{\text{Cabinet Height}} + 2\text{-}3/8" = \boxed{\text{Cavity Height}}$$

$$\boxed{\text{Cabinet Width}} + 2\text{-}3/8" = \boxed{\text{Cavity Width}}$$

These calculations include a 1" Reveal, 1/8" thick Flat Bar and 1/8" total installation clearance.

Overall cavity tolerance is +1/8", minus 0".

Wall Cavity Size : Optional

Angle / Trim Omitted

When cavity space is a factor, the surrounding trim can be eliminated to obtain the largest directory/cavity combination. The 1" reveal remains to maintain proper door operation. To determine cavity opening, add 2-1/8" to both the cabinet's height and width.

$$\boxed{\text{Cabinet Height}} + 2\text{-}1/8" = \boxed{\text{Cavity Height}}$$

$$\boxed{\text{Cabinet Width}} + 2\text{-}1/8" = \boxed{\text{Cavity Width}}$$

These calculations include a 1" Reveal and 1/8" total installation clearance.

Overall cavity tolerance is +1/8", minus 0".

