

Visuline® 2300.1 Series

Semi-Recessed Display



SUBMITTED FOR APPROVAL

This product is scheduled for shipment the week of :

Date _____

Production cannot begin until one (1) copy of these drawings is returned with your signature of approval by :

Date _____, otherwise rescheduling will be necessary. Drawing revisions may also require rescheduling.

Retain _____ Set(s)

Return _____ Set(s)

Customer Approval Required *(Check appropriate box)*

Purchaser _____

By (Print name & title clearly) _____

Signature _____ Date _____

Approved for Production

Approved as noted

Not approved
Resubmit with changes
Product subject to rescheduling

FOR REFERENCE ONLY *(Customer Waives Approval)*

Production Has Begun

This product is scheduled for shipment the week of :

Date _____

It is understood that customer, in waiving formal approval procedure, assumes full responsibility for the specifications, dimensions and details included herein.

APCO Use

Project Name _____ **APCO Order No.** _____

Customer Order No. _____

Original Submittal Date : _____

Prepared by (Print clearly) _____

Revision (Date) _____

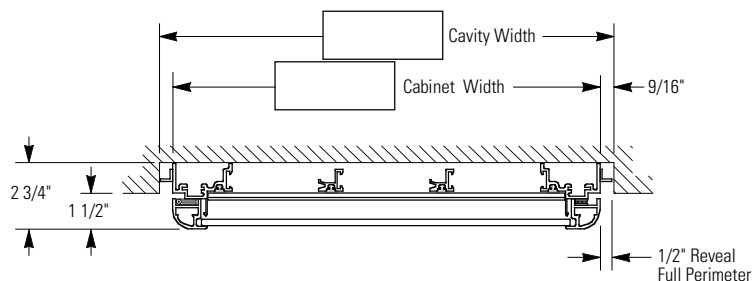
All design rights reserved.

Visuline® 2300.1 Series Semi-Recessed Display

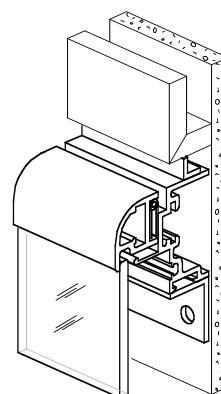


Product Details

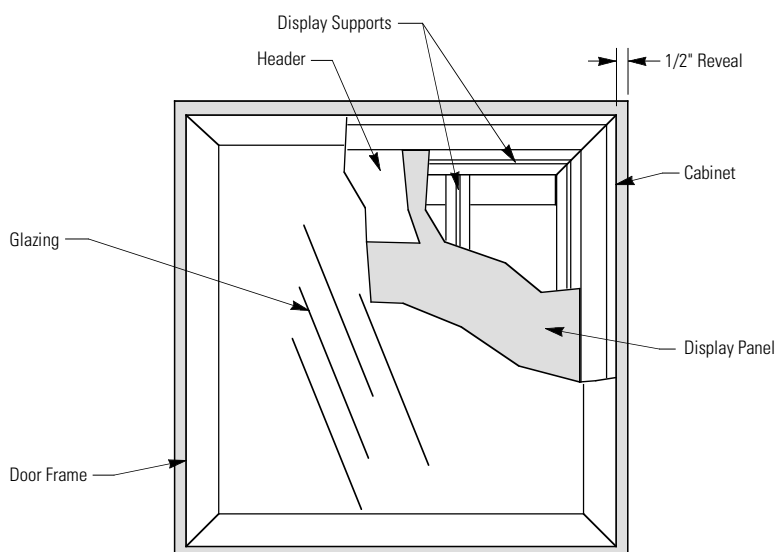
Section : Plan View



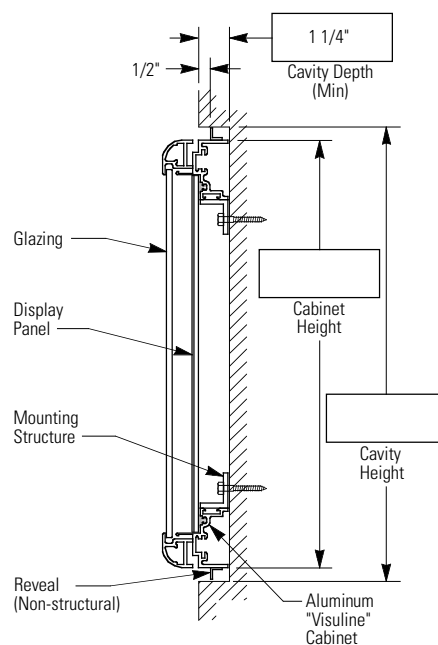
Cut-away Isometric View



Elevation : Front View

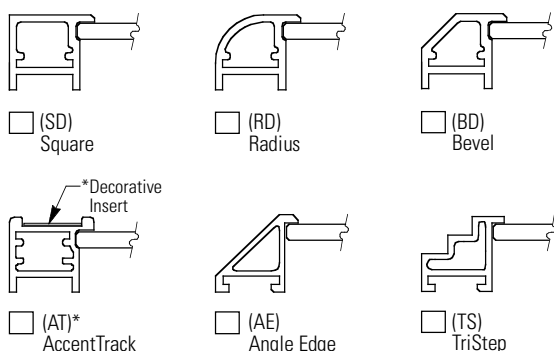


Section : Side View



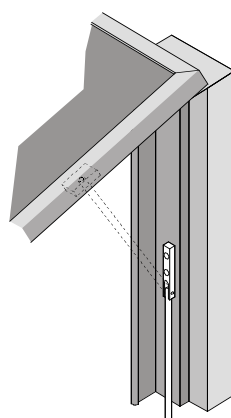
Door Profile Options

All shapes available in aluminum. Brass available in SD, RD & BD only.



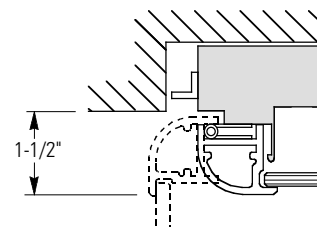
Prop Rods

Top hinged doors up to 30 lbs. are equipped with concealed prop rods.



Door Operating Clearance

Front face of door must protrude a minimum 1-1/2" from surrounding surface for door to fully open. Any variation may require factory changes.



IMPORTANT :
See "Installation / Mounting Details" page to determine Cavity Dimensions.

Visuline® 2300.1 Series Semi-Recessed Display



Specifications

Product

- Interior Use
- Exterior Use

Size: H. _____ W. _____ D. 2-3/4"
(See Note 4)

Estimated Weight _____

Wall Cavity

See Note 1

- Existing Cavity
- To Be Constructed

Size: H. _____ W. _____ D. _____

Door Frame Shape

- Square
- Radius
- Bevel
- AccentTrack
- AngleEdge
- TriStep

Hinge Location

- Left
- Top with Prop Rod Door Supports
(Opens approx. 60°, See Note 4)
- Other _____

Door Locking Device

- 3M "Dual Lock" Fastener (Standard)
- Special "APCO Concealed Lock"

Glazing

- Clear Tempered Glass (Standard)
(See Note 3)
- Other _____

Note 1

Wall cavity size is determined by adding cabinet housing, surrounding reveal and installation clearance. Cavity opening calculations for a standard 1/2" wide reveal is illustrated on "Installation / Mounting Details" page.

Note 2

Display area is calculated by subtracting 3" from both the cabinet housing's height and width. (Also See Note 4)

Height _____ - 3" = _____ (Display Area) Width _____ - 3" = _____ (Display Area)

Note 3

Clear glass has a natural slight green tint. Though typically unnoticeable, it may affect the appearance of certain colors.

Note 4

Top hinged aluminum doors exceeding 8.5 sq.ft. and top hinged brass doors exceeding 5.7 sq.ft. require gas cylinder "assists". To accommodate gas cylinders, the "GC" cabinet is required. This variation affects product depth and size of display area. Use separate Shop Drawing 2300.1GC to specify the heavier, top hinged, Semi-Recessed Visulines.

Note 5

All display components are available for interior use. Refer to Product Technical Manual for those components approved for exterior applications.

Reveal

- 1/2" Wide (Standard)
- Other _____

Finishes

Door

- Natural Satin Anodized
- 313 Dark Bronze Anodized
- 315 Black Anodized
- Other _____

Housing

- Natural Satin Anodized
- 313 Dark Bronze Anodized
- 315 Black Anodized
- Other _____

Reveal

- Natural Satin Anodized
- 313 Dark Bronze Anodized
- 315 Black Anodized
- Other _____

Special Comments

Component Information

See Notes 2, 4 & 5

- Single Component Configuration
- Multiple Component Configuration
(Provide Format)

Header

- With Header
- Without Header

Size: H. _____ W. _____

Directory

Informer Message Strips (Molded Plastic)

- I-50; 1/2" x 9"

Color: _____ Total Qty.: _____

- I-100; 1" x 9"

Color: _____ Total Qty.: _____

Accord15™ SignBands

| Part Code | Length | Color | Qty. |
|-----------|--------|-------|-------|
| _____ | _____ | _____ | _____ |
| _____ | _____ | _____ | _____ |
| _____ | _____ | _____ | _____ |
| _____ | _____ | _____ | _____ |
| _____ | _____ | _____ | _____ |
| _____ | _____ | _____ | _____ |
| _____ | _____ | _____ | _____ |
| _____ | _____ | _____ | _____ |
| _____ | _____ | _____ | _____ |
| _____ | _____ | _____ | _____ |

Accord15™ SignBands w/ Paper Insert

| Part Code | Length | Color | Qty. |
|-----------|--------|-------|-------|
| _____ | _____ | _____ | _____ |
| _____ | _____ | _____ | _____ |
| _____ | _____ | _____ | _____ |
| _____ | _____ | _____ | _____ |
| _____ | _____ | _____ | _____ |
| _____ | _____ | _____ | _____ |
| _____ | _____ | _____ | _____ |
| _____ | _____ | _____ | _____ |
| _____ | _____ | _____ | _____ |
| _____ | _____ | _____ | _____ |

Maps or Plans

Size: H. _____ W. _____

Magnetic Board

Size: H. _____ W. _____

Color: _____

Cork Board

Size: H. _____ W. _____

Color: _____

Fabric Board

Size: H. _____ W. _____

Color: _____

Custom Components

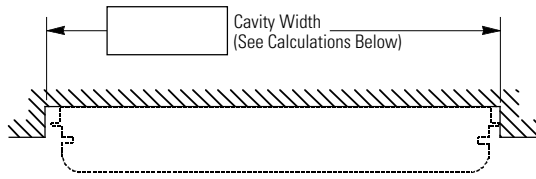
- Complete Specifications Provided

Visuline® 2300.1 Series Semi-Recessed Display



Installation / Mounting Details

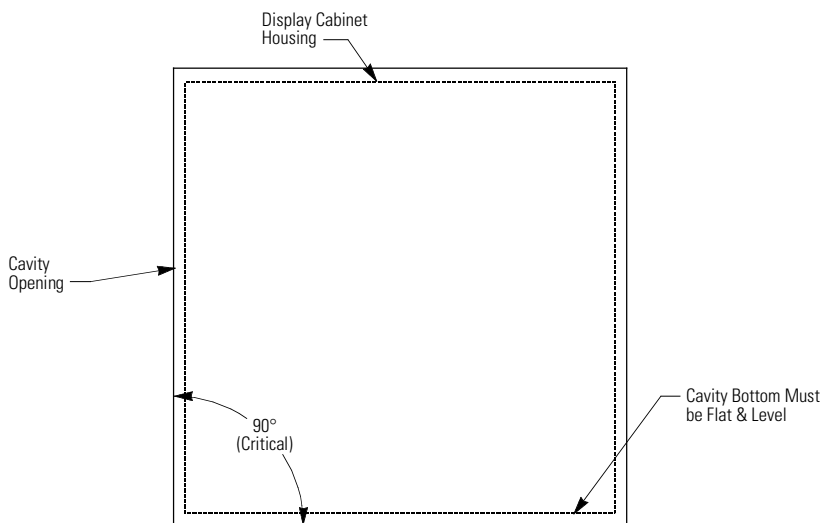
Section : Plan View



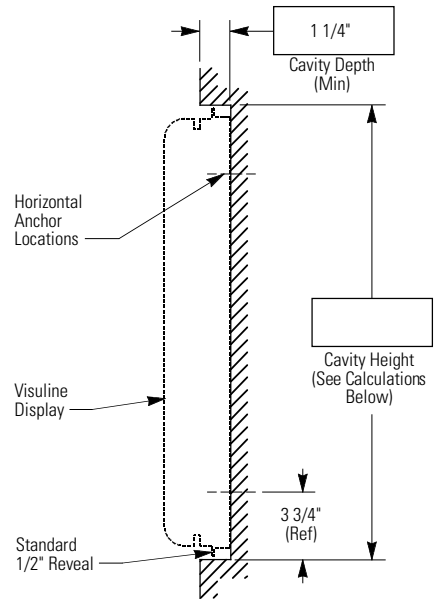
IMPORTANT :

APCO IS NOT RESPONSIBLE FOR CAVITY CONSTRUCTION WHICH VARIES FROM SPECIFICATIONS SHOWN ON THIS PAGE. Cavity opening size must be precisely constructed in terms of both size and squareness. Size calculations and cavity opening tolerances are shown below.

Elevation : Front View



Section : Side View



Cavity Size : Standard

1/2" Reveal

A standard 1/2" perimeter Reveal is provided to offset the variance between the cabinet housing and the cavity. To determine cavity opening, add 1-1/8" to both the cabinet's height and width.

$$\boxed{\text{Cabinet Height}} + 1-1/8" = \boxed{\text{Cavity Height}}$$

$$\boxed{\text{Cabinet Width}} + 1-1/8" = \boxed{\text{Cavity Width}}$$

These calculations include a 1/2" Reveal and 1/16" installation clearance around full perimeter.

Overall cavity tolerance is +1/8", minus 0".

