



The PolySign Single-Panel Series offers all of the same features and benefits of the Multi-Panel Series, but uses only one changeable fiberglass panel.

**Other Features & Benefits:**

- Internally illuminated & non-illuminated (photo cell option available for illuminated models)
- Curved panel option called SignCurve (2 & 4" only)
- Modular concept with changeable fiberglass panel for easy updates
- Variety of support & post shapes in 2", 4", & 8" profiles
- Variety of post finishes
- Permanent or semi-permanent graphics
- 7-year limited warranty
- Fade, vandal, & impact resistant
- High quality polyurethane coating
- Wind load engineered to 120 mph
- UL listed

**Applications:**

- Building Identification
- Entrance ID Signs for Campus Settings
- Smaller Pedestrian & Vehicular Directionals

**Ideal for:**

Hospitals, Medical Centers, Universities, Office Parks, Churches, Government Facilities, and More.



1. Illuminated Surface Mount on Custom Brick Monument



5. Illuminated Post Mount



2. Non-Illuminated Surface Mount on Custom Marble Monument



6. Non-Illuminated Post Mount



3. Illuminated Single Panel on Custom Concrete Base



4. Two Sided Pylon w/ SignCurve Panels & Contour Posts

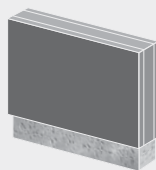


7. Non-Illuminated Post & Panel

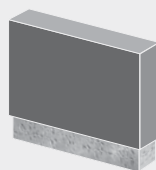
**Base Mount Signs**



12\*\*  
Removable Panel



8\*\*, 12\*\*  
Removable Panel



8", 12"  
Permanent Panel

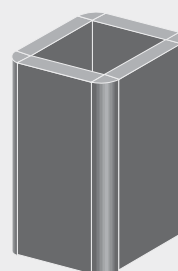
**Post Mount Signs**



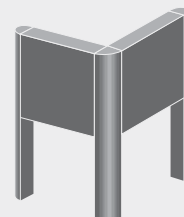
2", 4", 8\*\*  
Removable Panel



2", 4", 8\*\*  
Removable Panel



2", 4"  
Permanent Panel



2", 4",  
Removable Panel



8" & 12" Optional End Shapes for Base Mount

\*Illumination Available



8" Post Profiles



2" & 4" Post Profiles

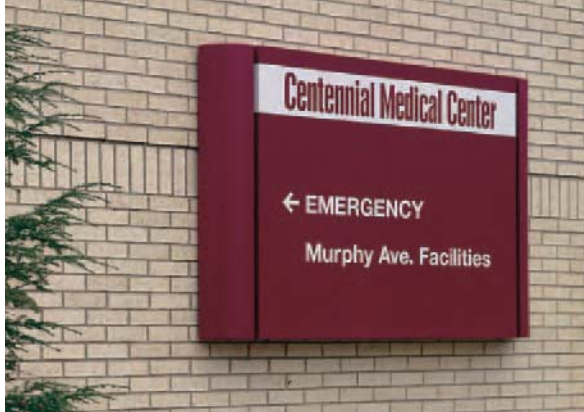
**SignCurve™ Panel Option Available**



The PolySign Economy Series offers many of the same features and benefits as the other PolySign products, but with a solution that is free from the standard "attached post" look. The post supports are inboard and nest within extruded aluminum sleeves, which are a part of the bonded fiberglass and aluminum sign panel. The end result is a clean, attractive sign that provides outstanding performance and durability at a significantly lower cost than other exterior signs.

### Other Features & Benefits

- Easy installation
- Quick delivery
- Non-illuminated only
- 2-1/2" deep panel sizes in a variety of heights and widths (12" to 72")
- Permanent or semi-permanent graphics
- 7-year limited warranty
- Fade, vandal, & impact resistant



8. Non-Illuminated Wall/Surface Mount w/ Radius End Shapes



11. Illuminated 4 Sided Cube with Custom Cap & Lantern



9. Custom Configuration Single Panel Post Mounted w/ Two Economy Post & Panel Modules



12. Curved Panel, Contour Posts



1. Economy Double Post & Panel



10. Illuminated Wall/Surface Mount

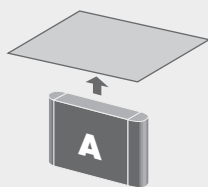


13. Curved Panel w/ Companion Contour Posts



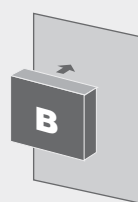
2. Economy Single Post & Panel

### Ceiling Mount



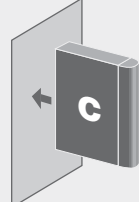
2", 4", 8", 12"

### Wall Mount



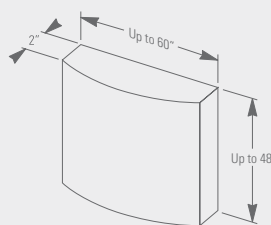
2", 6"

### Projection Mount



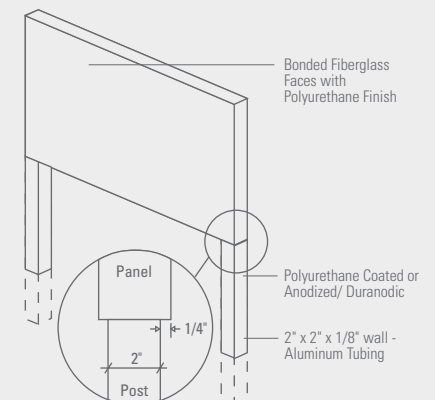
2", 4", 8", 12"

### SignCurve™ Panel Option



SignCurve™		Panel Width					
Panel Sizes		18"	24"	30"	36"	48"	60"
Panel Height	12"	•	•	•	•	•	•
	18"	•	•	•	•	•	•
	24"	•	•	•	•	•	•
	30"	•	•	•	•	•	•
	36"	•	•	•	•	•	•
	48"	•	•	•	•	•	•

### Economy Series Exploded View



\*Illumination Available